

BRAIN HEALTH SPINAL CORD INJURY

In 2019, there were

6518

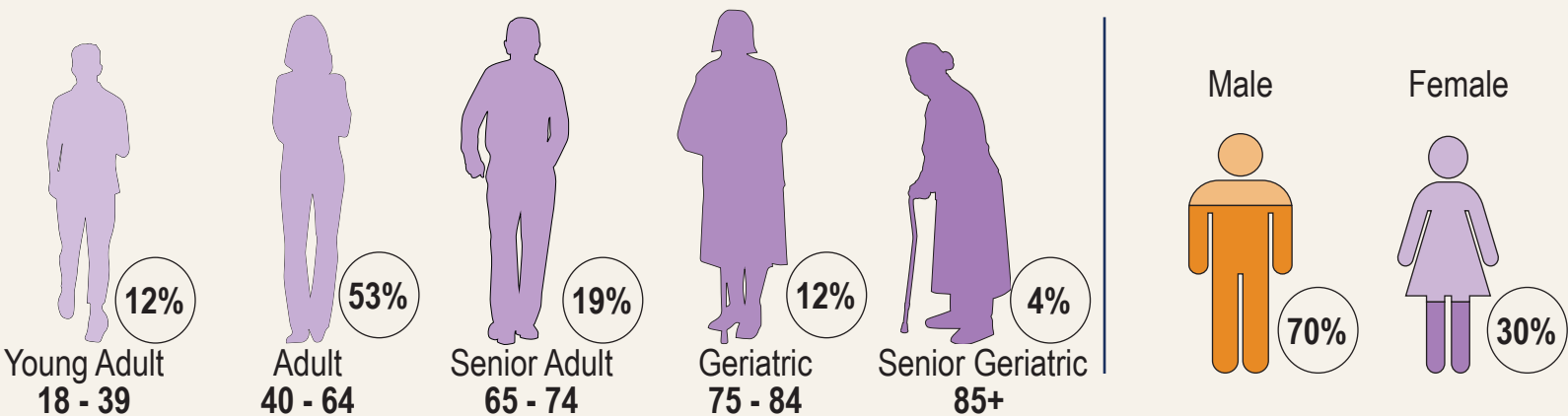
Ontarians living with **SPINAL CORD INJURY**

and

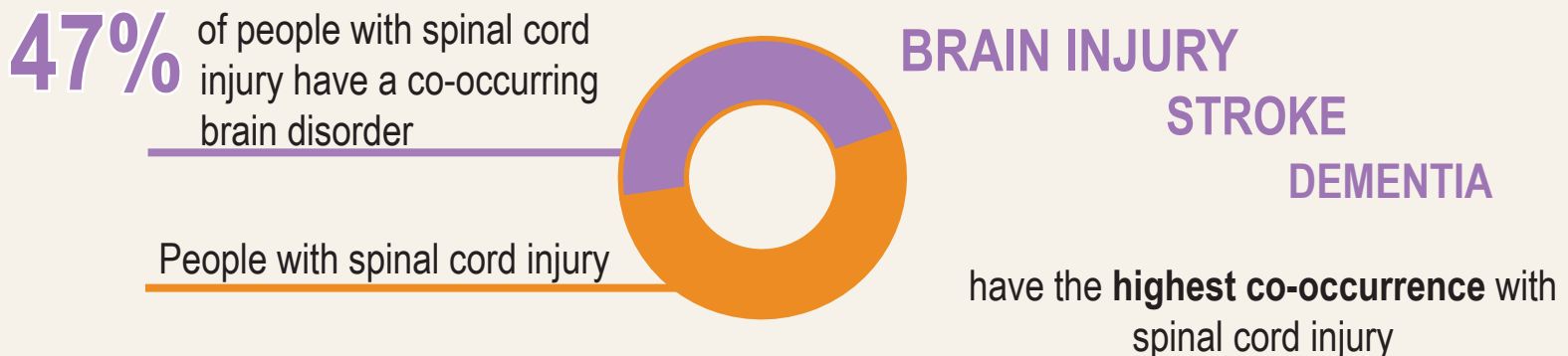
523

NEW people identified that year

SPINAL CORD INJURY ACROSS AGE AND SEX

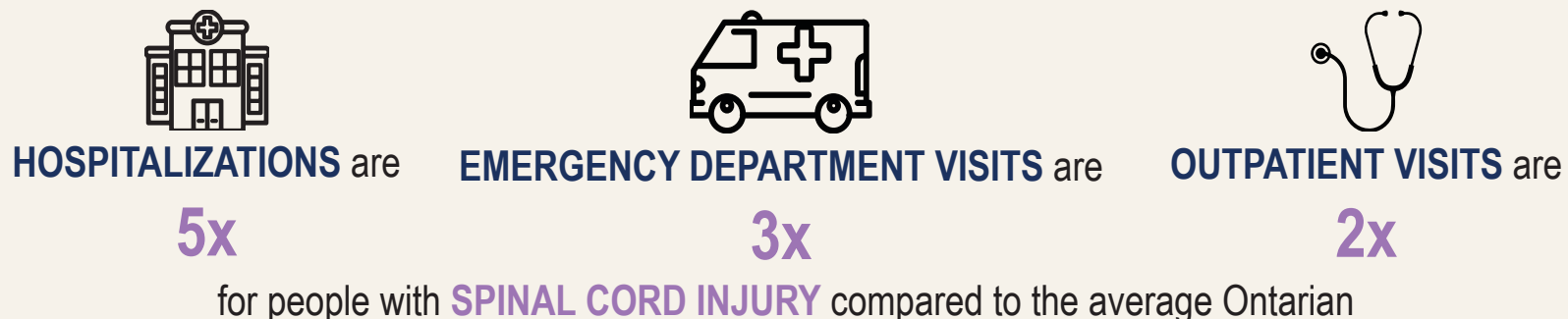


COMMONLY CO-OCCURRING BRAIN DISORDERS



MENTAL HEALTH AND ADDICTIONS VISITS

The number of **MENTAL HEALTH AND ADDICTIONS** related



COST

Compared to the average Ontarian, the annual **DIRECT COST** to the healthcare system is:



The data in this infographic is from the Brain Health in Ontario Project. The data is produced by the Institute for Clinical Evaluative Sciences and the Ontario Brain Institute. To learn more about the project visit www.braininstitute.ca/BrainHealth.

