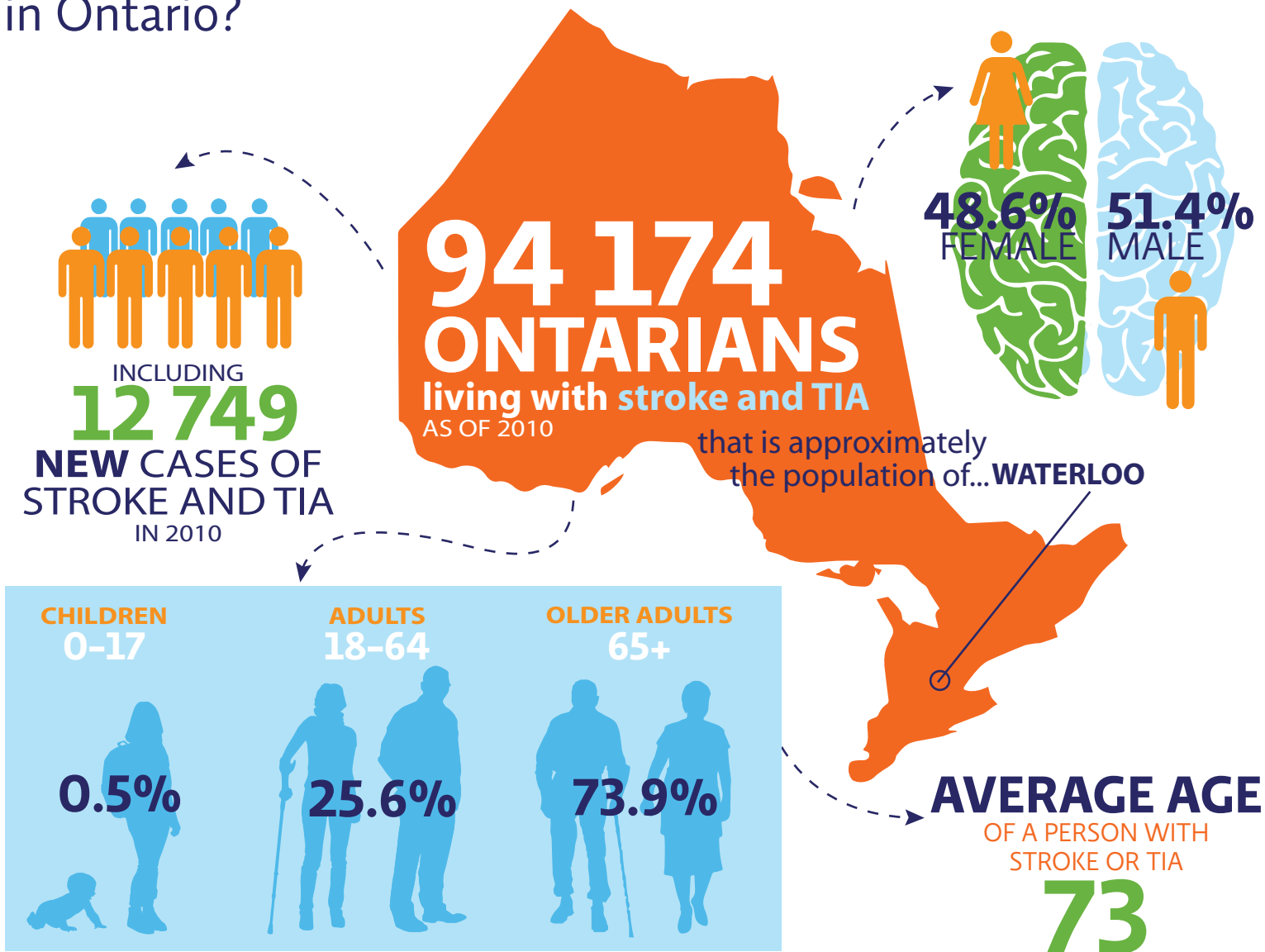


What is the impact of **STROKE AND TRANSIENT ISCHEMIC ATTACK (TIA)** in Ontario?



**COMPARED TO THE AVERAGE ONTARIAN,
THE DIRECT COST TO THE HEALTH CARE SYSTEM FOR ONE YEAR IS:**

8.3x
FOR **EXISTING** CASES
OF STROKE AND TIA



19.4x
FOR **NEW** CASES
OF STROKE AND TIA

Learn about the 12 other brain disorders [here](#).

The data in this infographic is from **Brain Disorders in Ontario: Prevalence, Incidence, and Costs from Health Administrative Data**, a report produced by the Institute for Clinical Evaluative Sciences and the Ontario Brain Institute. Click [here](#) to read the report.



ONTARIO
BRAIN
INSTITUTE

INSTITUT
ONTARIEN
DU CERVEAU

