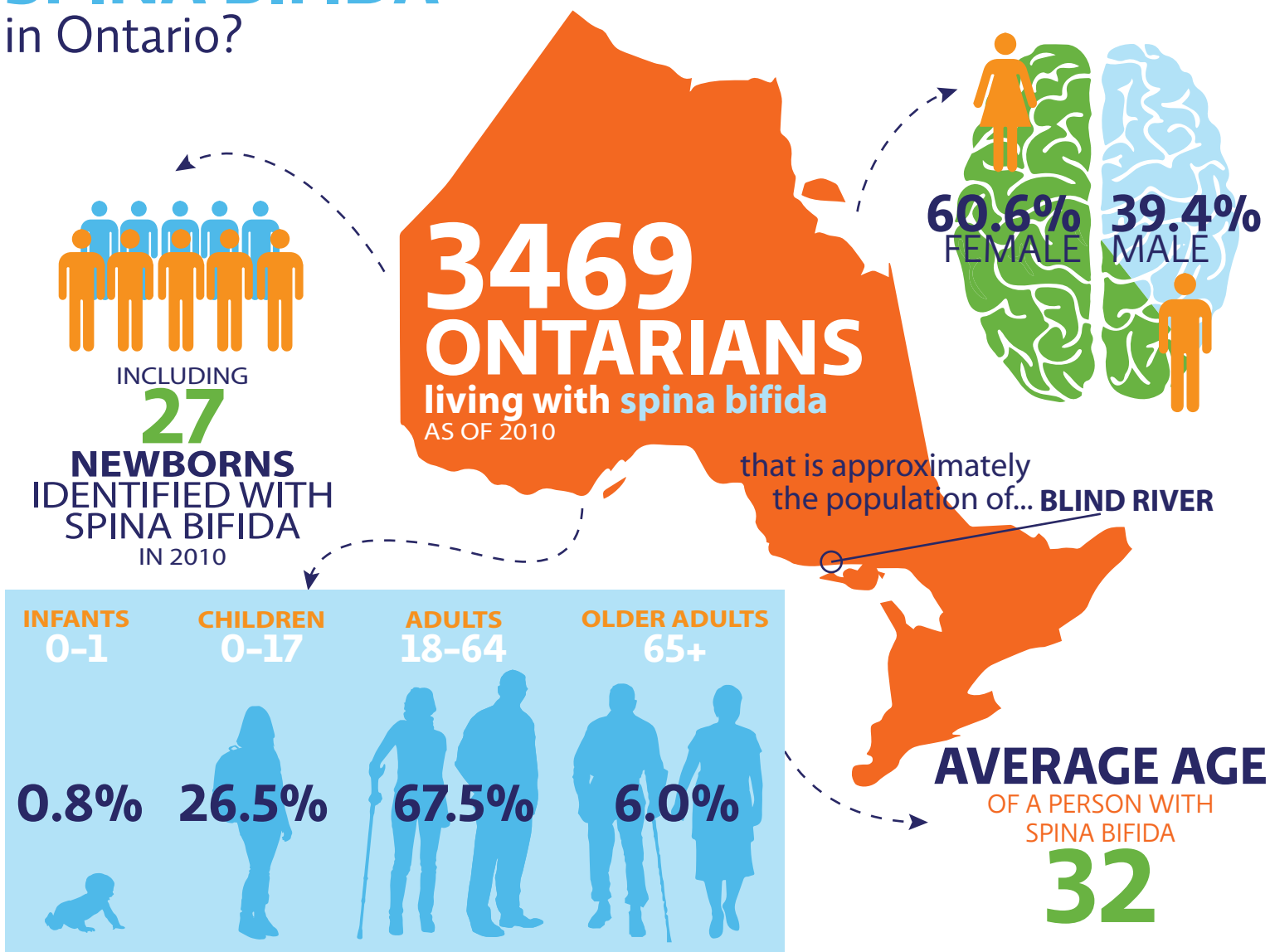


What is the impact of SPINA BIFIDA in Ontario?



COMPARED TO THE AVERAGE ONTARIAN, THE DIRECT COST TO THE HEALTH CARE SYSTEM FOR ONE YEAR IS:

6.0x
FOR **EXISTING** CASES OF SPINA BIFIDA

Learn about the 12 other brain disorders [here](#).

The data in this infographic is from **Brain Disorders in Ontario: Prevalence, Incidence, and Costs from Health Administrative Data**, a report produced by the Institute for Clinical Evaluative Sciences and the Ontario Brain Institute. Click [here](#) to read the report.