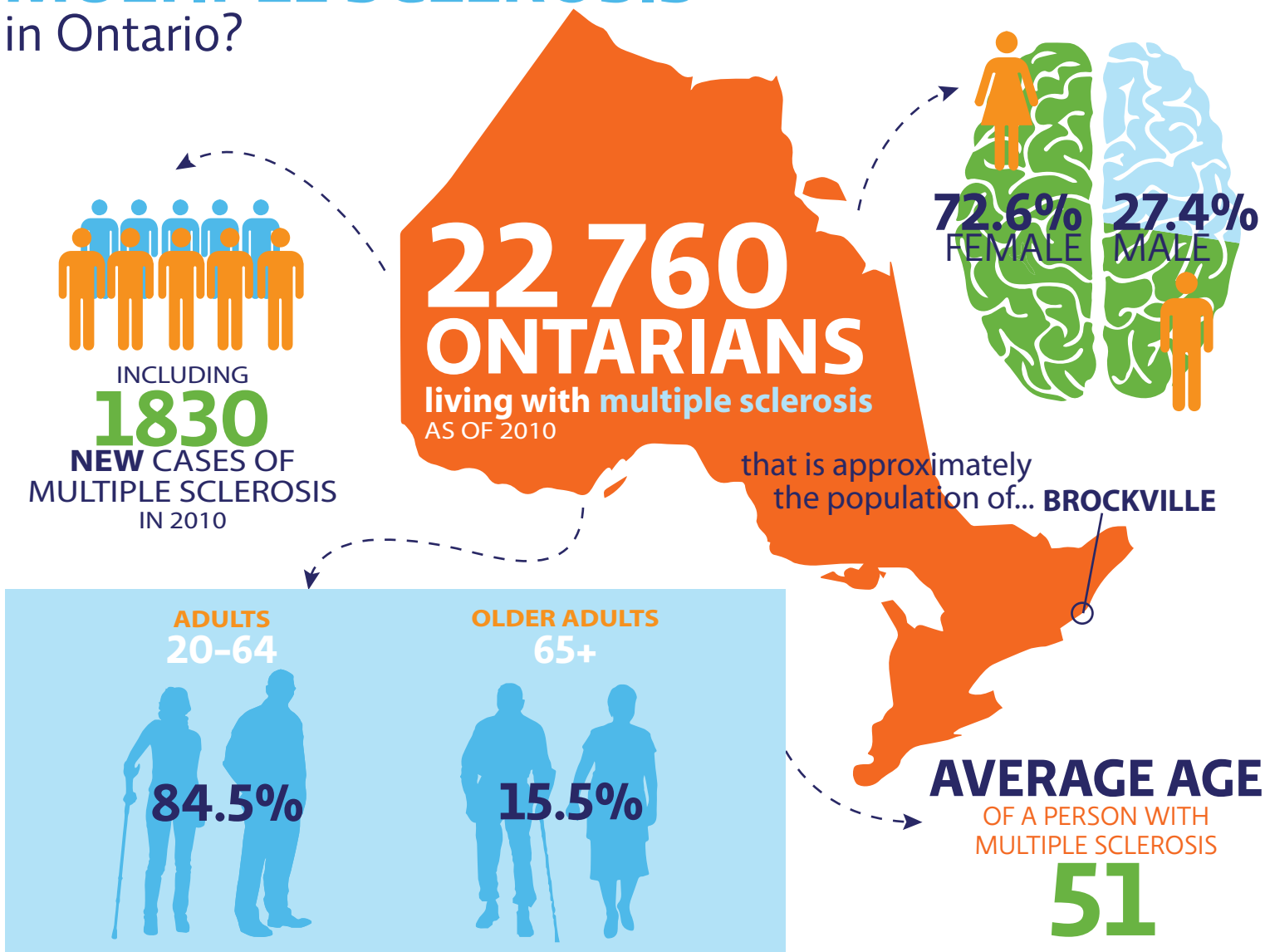


# What is the impact of **MULTIPLE SCLEROSIS** in Ontario?



**COMPARED TO THE AVERAGE ONTARIAN,  
THE DIRECT COST TO THE HEALTH CARE SYSTEM FOR ONE YEAR IS:**

**4.8x**  
FOR **EXISTING** CASES  
OF MULTIPLE SCLEROSIS



**3.9x**  
FOR **NEW** CASES  
OF MULTIPLE SCLEROSIS

Learn about the 12 other brain disorders [here](#).

The data in this infographic is from **Brain Disorders in Ontario: Prevalence, Incidence, and Costs from Health Administrative Data**, a report produced by the Institute for Clinical Evaluative Sciences and the Ontario Brain Institute. Click [here](#) to read the report.



ONTARIO  
BRAIN  
INSTITUTE

INSTITUT  
ONTARIEN  
DU CERVEAU

