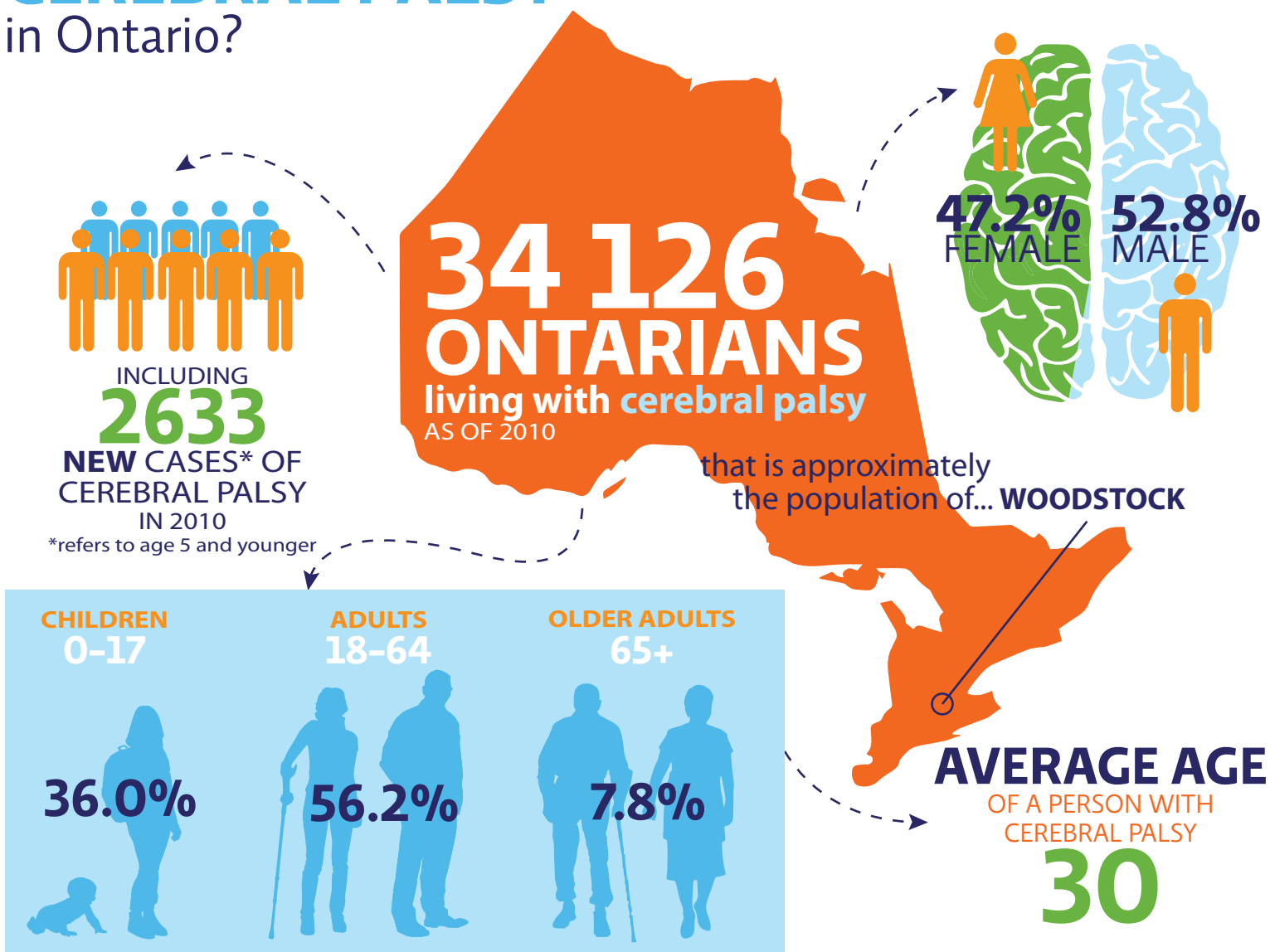


# What is the impact of **CEREBRAL PALSY** in Ontario?



**COMPARED TO THE AVERAGE ONTARIAN,  
THE DIRECT COST TO THE HEALTH CARE SYSTEM FOR ONE YEAR IS:**

**4.5x**  
FOR **EXISTING** CASES  
OF CEREBRAL PALSY

Learn about the 12 other brain disorders [here](#).

The data in this infographic is from **Brain Disorders in Ontario: Prevalence, Incidence, and Costs from Health Administrative Data**, a report produced by the Institute for Clinical Evaluative Sciences and the Ontario Brain Institute. Click [here](#) to read the report.